

Pocket RX & TX User Manual

Rev 1.3



Product information is subject to change without prior notice.

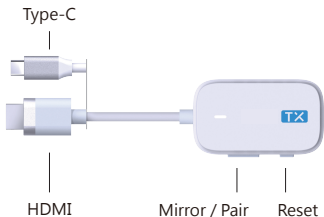
About Pocket

Transmitter (H-1/ C-1 / BC-1)

Easily mirror whatever shows on your laptop or mobile screen, ideal for video-watching, game-play, and idea sharing.

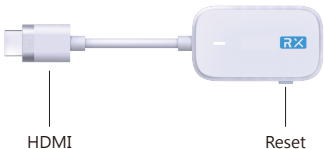
* C-1/ BC-1 model with the Type-C connector, H-1 model with the HDMI connector.

* BC-1 model is chargeable via Type-C port.



Receiver (R-1)

Display the contents passed from your transmitter on the big screen like HDTV or projector screen.



How to mirror

1 Install the receiver

Use the Type C connector to connect EZCast Receiver to the HDMI port on TV, and power on by an independent power 5V/1A adapter.

2 Plug and play

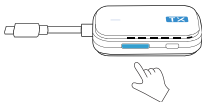
Plug EZCast Transmitter to Type C or HDMI port on laptop or mobile. Wait a few seconds until the flashing light on transmitter stops, and it will start mirroring automatically.

When using the Transmitter H-1 (HDMI connector), using the Type C connector connect to an independent power 5V/1A adapter.



3 Stop and restart mirroring

Press the mirror / pair button on the transmitter to stop mirroring or restart mirroring.

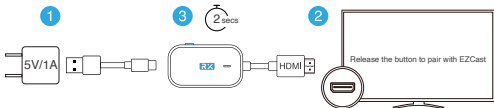


Note : Pocket Transmitter support mirroring for all laptops including Windows and MacOS, and Android mobiles with DP Alt output. To reset to default, press the reset button for 5s.

How to pair Transmitter with receiver

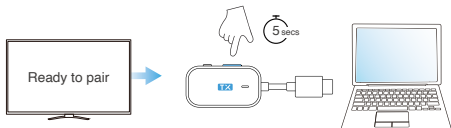
1 Turn on pairing mode for the receiver

- (1) Power up the receiver by an external adapter (5V/1A).
- (2) Plug the receiver to the HDMI port on the monitor.
- (3) Press the reset button on receiver for 2 seconds. Release when the screen shows "Release the button to pair with EZCast" .



2 Press the Mirror / Pair button on Transmitter

Plug the transmitter on laptop or mobile, when using the Transmitter H-1 , please make sure using the Type C connector to provide power. Press the mirror / pair button on the transmitter for 5 seconds to complete pairing while the screen shows "Ready to pair" . After paired, it will start casting automatically.



Note : There are 2 mode for reset button on Receiver, depending on pressing duration.

- (1) Press for 2 seconds: Turn on pairing mode for the Transmitter.
- (2) Press for 10 seconds: Reset the Receiver to default.

OTA Upgrade

1 Enabling receiver SSID and PSK

(1) Plug the receiver to the monitor, and using the Type C connector to provide power.

(2) Check the monitor for the displayed SSID and PSK of the receiver. If it is not displayed, press the reset button on the receiver for 2 seconds to turn on the pairing mode for display.

2 Connecting receiver to a network

(1) Turn on the Wi-Fi settings page on your phone or computer.



(2) Connect to the SSID of the receiver and enter the PSK displayed on the monitor to complete the connection.

(3) Open a browser and enter 192.168.203.1.

(4) Enter the settings page, turn on the internet settings, and connect the receiver to the network.

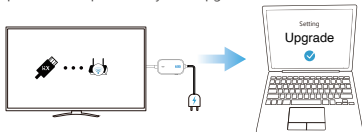


3 Using web settings for upgrades

(1) Check the icon  ...  on the monitor, verify the receiver is connected to the network.

(2) After connecting the receiver to the network, return to the settings page and select "Upgrade."

(3) The system checks the current version status. If there is a newer version, agree to update to complete the system upgrade.



Product informations

Transmitter

- Antenna: 1T1R (on board)
- Wi-Fi: 5Ghz
- Interface: HDMI or Type-C

Receiver

- Antenna: 1T1R (on board)
- Wi-Fi: 5Ghz
- Interface: HDMI

MIC 警語

Note: 5G band (W52) indoor use only.

NCC 警語

取得審驗證明之低功率射頻器材，非經核准，公司、商號或使用者均不得擅自變更頻率、加大功率或變更原設計之特性及功能。低功率射頻器材之使用不得影響飛航安全及干擾合法通信；經發現有干擾現象時，應立即停用，並改善至無干擾時方得繼續使用。前述合法通信，指依電信管理法規定作業之無線電通信。低功率射頻器材須忍受合法通信或工業、科學及醫療用電波輻射性電機設備之干擾。

FCC statement

This device complies with part 15 of the FCC Rules. Operation is subject to the following two conditions: (1) this device may not cause harmful interference (2) this device must accept any interference received, including interference that may cause undesired operation.

Note: This equipment has been tested and found to comply with the limits for a Class B digital device, pursuant to part 15 of the FCC Rules. These limits are designed to provide reasonable protection against harmful interference in a residential installation. This equipment generates, uses, and can radiate radio frequency energy and, if not installed and used in accordance with the instructions, may cause harmful interference to radio communications. However, there is no guarantee that interference will not occur in a particular installation.

If this equipment does cause harmful interference to radio or television reception, which can be determined by turning the equipment off and on, the user is encouraged to try to correct the interference by one or more of the following measures:

- Reorient or relocate the receiving antenna.
- Increase the separation between the equipment and receiver.
- Connect the equipment to an outlet on a circuit different from that to which the receiver is connected.
- Consult the dealer or an experienced radio/TV technician for help.

Changes or modifications to this product not authorized by Apple could void the electromagnetic compatibility (EMC) and wireless compliance and negate your authority to operate the product.

This product has demonstrated EMC compliance under conditions that included the use of compliant peripheral devices and shielded cables between system components. It is important that you use compliant peripheral devices and shielded cables between system components to reduce the possibility of causing interference to radios, television sets, and other electronic devices.

RF Exposure Statement(Receiver):

To maintain compliance with FCC's RF Exposure guidelines, this equipment should be installed and operated with minimum distance of 20cm the radiator your body. This device and its antenna(s) must not be co-located or operation in conjunction with any other antenna or transmitter.

SAR statement (Transmitter):

This device meets the government's requirements for exposure to radio waves. This device is designed and manufactured not to exceed the emission limits for exposure to radio frequency (RF) energy set by the Federal Communications Commission of the U.S. Government.

The SAR limit set by the FCC is 1.6W/Kg. For body-worn operation, this device has been tested and meets the FCC RF exposure guidelines for use with an accessory that contains no metal and positions the device a minimum of 0mm from the body. RF exposure compliance with any body-worn accessory that contains metal was not tested and certified. And use of such body-worn accessory should be avoided. Accessory available in market and must be used to keep use distance 0mm from EUT to body-worn operation.

Pocket RX & TX 快速指南

Rev 1.3



產品訊息如有更改，恕不另行通知。

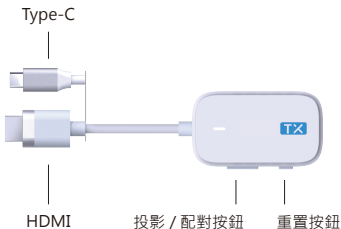
關於 Pocket

發射器 (H-1、C-1、BC-1)

連接電腦或手機，輕鬆鏡像螢幕的顯示內容。
適合用於觀看影片、玩遊戲和分享螢幕內容。

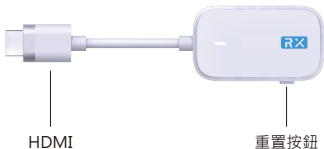
* H-1 屬 HDMI 接頭；C-1、BC-1 屬 Type-C 接頭。

* BC-1 型號可通過 Type-C 接口充電（非必需）。



無線顯示接收器 (R-1)

連接於 HDTV 或螢幕來顯示您從發射器傳遞的內容。



如何鏡像

1 安裝無線顯示接收器

將無線顯示接收器插到電視 HDMI 接口，並將 Type C 接頭以獨立電源供電 (5V/1A)。

2 發射器接上電腦或手機即可開始投影

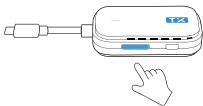
將發射器接上電腦或手機的 Type-C 或 HDMI 接口，等待數秒至發射器上的閃燈停止，即開始自動投影。

若使用 H-1 型號的發射器 (HDMI 接頭)，需以 Type-C 接頭連接至獨立電源 (5V/1A) 供電。



3 停止/重新鏡像

點擊發射器上投影 / 配對按鈕，可停止或重新鏡像。



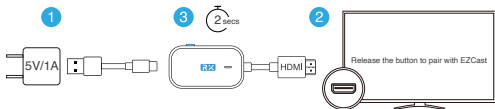
注意：

Pocket 發射器支援 Windows/ macOS 電腦，以及支援 DP 輸出的 Android 手機。長按重置按鈕 5 秒可恢復原廠設定。

如何配對接收器

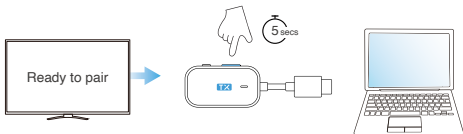
1 開啟接收器配對模式

- (1) 將無線顯示接收器以 Type-C 接頭連接至電源。
- (2) 將無線顯示接收器 HDMI 端接上螢幕。
- (3) 長按無線顯示接收器按鈕 2 秒左右，待畫面顯示文字 “Release the button to pair with EZCast” 時放開按鈕。



2 按下發射器上的投影 / 配對按鈕

將發射器接上電腦或手機，若為 H-1 型號，請確保已連接 Type-C 供電。並在畫面顯示 “Ready to pair” 時長按發射器上的投影 / 配對按鈕 5 秒即完成配對。



注意：無線顯示接收器上的重置按鈕，根據按壓時間不同，有兩種設定模式。

- (1) 長按 2 秒：開啟接收器的配對模式，供與發射器進行配對。
- (2) 長按 10 秒：將接收器回復原廠設定。

如何進行線上更新

1 開啟接收器 SSID 及 PSK

- (1) 將無線顯示接收器連接至螢幕，並將 USB 端連接至電源。
- (2) 確認螢幕顯示投影設備的 SSID 及 PSK。若無顯示，請長按無線接收器上的重置按鈕 2 秒，透過開啟配對頁面以顯示。

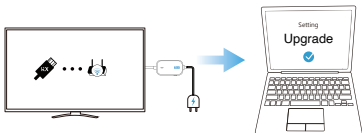
2 接收器連線網路

- (1) 開啟手機或電腦的 Wi-Fi 設定頁面
- (2) 連線至投影設備 SSID，輸入螢幕顯示的密碼 PSK，完成連線
- (3) 開啟瀏覽器，輸入 192.168.203.1
- (3) 進入設定頁面，開啟網際網路設定，為接收器連線至網路。



3 使用網頁設定來進行升級

- (1) 確認螢幕上方出現接收器連線至網路的圖示。
- (2) 接收器連線至網路後，回到設定頁面，並選擇「升級」
- (3) 系統檢視當前版本狀態，若有最新版本，同意更新以完成系統升級。



產品資訊

發射器

- 天線：1T1R (已裝載)
- 無線網路：5Ghz
- 端口：HDMI 或 Type-C

無線顯示接收器

- 天線：1T1R (已裝載)
- 無線網路：5Ghz
- 端口：HDMI

MIC 警語

Note: 5G band (W52) indoor use only.

NCC 警語

取得審驗證明之低功率射頻器材，非經核准，公司、商號或使用者均不得擅自變更頻率、加大功率或變更原設計之特性及功能。低功率射頻器材之使用不得影響飛航安全及干擾合法通信；經發現有干擾現象時，應立即停用，並改善至無干擾時方得繼續使用。前述合法通信，指依電信管理法規定作業之無線電通信。低功率射頻器材須忍受合法通信或工業、科學及醫療用電波輻射性電機設備之干擾。

FCC statement

This device complies with part 15 of the FCC Rules. Operation is subject to the following two conditions: (1) this device may not cause harmful interference (2) this device must accept any interference received, including interference that may cause undesired operation.

Note: This equipment has been tested and found to comply with the limits for a Class B digital device, pursuant to part 15 of the FCC Rules. These limits are designed to provide reasonable protection against harmful interference in a residential installation. This equipment generates, uses, and can radiate radio frequency energy and, if not installed and used in accordance with the instructions, may cause harmful interference to radio communications. However, there is no guarantee that interference will not occur in a particular installation.

If this equipment does cause harmful interference to radio or television reception, which can be determined by turning the equipment off and on, the user is encouraged to try to correct the interference by one or more of the following measures:

- Reorient or relocate the receiving antenna.
- Increase the separation between the equipment and receiver.
- Connect the equipment to an outlet on a circuit different from that to which the receiver is connected.
- Consult the dealer or an experienced radio/TV technician for help.

Changes or modifications to this product not authorized by Apple could void the electromagnetic compatibility (EMC) and wireless compliance and negate your authority to operate the product.

This product has demonstrated EMC compliance under conditions that included the use of compliant peripheral devices and shielded cables between system components. It is important that you use compliant peripheral devices and shielded cables between system components to reduce the possibility of causing interference to radios, television sets, and other electronic devices.

RF Exposure Statement(Receiver):

To maintain compliance with FCC's RF Exposure guidelines, this equipment should be installed and operated with minimum distance of 20cm the radiator your body. This device and its antenna(s) must not be co-located or operation in conjunction with any other antenna or transmitter.

SAR statement (Transmitter):

This device meets the government's requirements for exposure to radio waves. This device is designed and manufactured not to exceed the emission limits for exposure to radio frequency (RF) energy set by the Federal Communications Commission of the U.S. Government.

The SAR limit set by the FCC is 1.6W/Kg. For body-worn operation, this device has been tested and meets the FCC RF exposure guidelines for use with an accessory that contains no metal and positions the device a minimum of 0mm from the body. RF exposure compliance with any body-worn accessory that contains metal was not tested and certified. And use of such body-worn accessory should be avoided. Accessory available in market and must be used to keep use distance 0mm from EUT to body-worn operation.

Pocket RX & TX 使用手册

Rev 1.3



本手册所提到的产品规格和资讯仅供参考，如有变更，恕不另行通知。

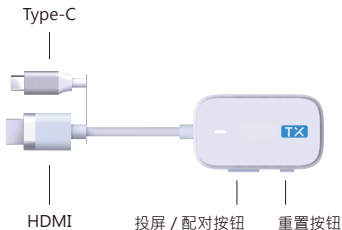
关于 Pocket

发射器 (H-1、C-1、BC-1)

连接电脑或手机，轻松镜像屏幕的显示内容。
适合用于观看视频、玩游戏和分享屏幕内容。

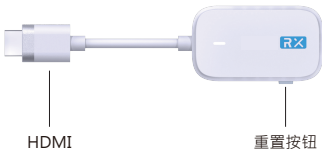
* H-1 属 HDMI 接头；C-1、BC-1 属 Type-C 接头。

* BC-1 型号可通过 Type-C 接口充电（非必需）。



无线显示接收器 (R-1)

连接于 HDTV 或屏幕来显示您从发射器传递的内容。



如何镜像

1 安装无线显示接收器

将无线显示接收器插到电视 HDMI 接口，并将 Type C 接头以独立电源供电 (5V/1A)。

2 发射器接上电脑或手机即可开始投屏

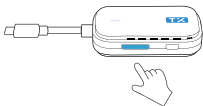
将发射器接上电脑或手机的 Type-C 或 HDMI 接口，等待数秒至发射器上的闪灯停止，即开始自动投屏。

若使用 H-1 型号的发射器 (HDMI 接头)，需以 Type-C 接头连接至独立电源 (5V/1A) 供电。



3 停止/重新镜像

点击发射器上投屏 / 配对按钮，可停止或重新镜像。



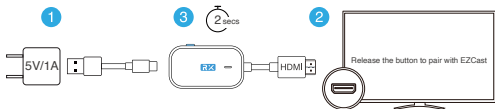
注意：

Pocket 发射器支援 Windows/ macOS 电脑，以及支援 DP 输出的 Android 手机。长按重置按钮 5 秒可恢复原厂设定。

如何配对接收器

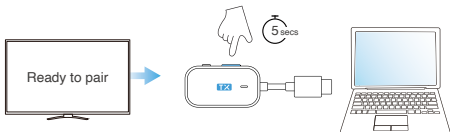
1 开启接收器配对模式

- (1) 将无线显示接收器以 Type-C 接头连接至电源。
- (2) 将无线显示接收器 HDMI 端接上萤幕。
- (3) 长按无线显示接收器按钮 2 秒左右，待屏幕显示文字“Release the button to pair with EZCast”时放开按钮。



2 按下发射器上的投影 / 配对按钮

将发射器接上电脑或手机，若为 H-1 型号，请确保已连接 Type-C 供电。并在屏幕显示“Ready to pair”时长按发射器上的投屏 / 配对按钮 5 秒即完成配对。



注意：无线显示接收器上的重置按钮，根据按压时间不同，有两种设定模式。

- (1) 长按 2 秒：开启接收器的配对模式，供与发射器进行配对。
- (2) 长按 10 秒：将接收器回復原厂设定。

如何进行线上更新

1 开启接收器 SSID 及 PSK

- (1) 将无线显示接收器连接至屏幕，并将 USB 端连接至电源。
- (2) 确认屏幕显示出投影设备的 SSID 及 PSK。若无显示，长按无线接收器上的重置按钮 2 秒，开启配对页面以显示。

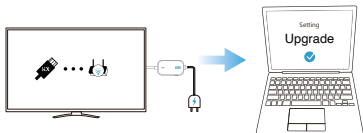
2 接收器连线网路

- (1) 开启手机或电脑的 Wi-Fi 设定页面
- (2) 连线至投影设备 SSID，输入屏幕显示的密码 PSK，完成连线
- (3) 开启浏览器，输入 **192.168.203.1**
- (3) 进入设定页面，开启网际网路设定，为接收器连线至网路。



3 使用网页设定来进行升级

- (1) 确认屏幕上方出现接收器连线至网路的图示。
- (2) 接收器连线至网路后，回到设定页面，并选择「升级」
- (3) 系统检视当前版本状态，若有最新版本，同意更新以完成系统升级。



产品参数

发射器

- 天线：1T1R (已装载)
- 无线网络：5Ghz
- 端口：HDMI 或 Type-C

无线显示接收器

- 天线：1T1R (已装载)
- 无线网络：5Ghz
- 端口：HDMI

MIC 警語

Note: 5G band (W52) indoor use only.

NCC 警語

取得審驗證明之低功率射頻器材，非經核准，公司、商號或使用者均不得擅自變更頻率、加大功率或變更原設計之特性及功能。低功率射頻器材之使用不得影響飛航安全及干擾合法通信；經發現有干擾現象時，應立即停用，並改善至無干擾時方得繼續使用。前述合法通信，指依電信管理法規定作業之無線電通信。低功率射頻器材須忍受合法通信或工業、科學及醫療用電波輻射性電機設備之干擾。

FCC statement

This device complies with part 15 of the FCC Rules. Operation is subject to the following two conditions: (1) this device may not cause harmful interference (2) this device must accept any interference received, including interference that may cause undesired operation.

Note: This equipment has been tested and found to comply with the limits for a Class B digital device, pursuant to part 15 of the FCC Rules. These limits are designed to provide reasonable protection against harmful interference in a residential installation. This equipment generates, uses, and can radiate radio frequency energy and, if not installed and used in accordance with the instructions, may cause harmful interference to radio communications. However, there is no guarantee that interference will not occur in a particular installation.

If this equipment does cause harmful interference to radio or television reception, which can be determined by turning the equipment off and on, the user is encouraged to try to correct the interference by one or more of the following measures:

-Reorient or relocate the receiving antenna.

-Increase the separation between the equipment and receiver.

-Connect the equipment to an outlet on a circuit different from that to which the receiver is connected.

-Consult the dealer or an experienced radio/TV technician for help.

Changes or modifications to this product not authorized by Apple could void the electromagnetic compatibility (EMC) and wireless compliance and negate your authority to operate the product.

This product has demonstrated EMC compliance under conditions that included the use of compliant peripheral devices and shielded cables between system components. It is important that you use compliant peripheral devices and shielded cables between system components to reduce the possibility of causing interference to radios, television sets, and other electronic devices.

RF Exposure Statement(Receiver):

To maintain compliance with FCC's RF Exposure guidelines, this equipment should be installed and operated with minimum distance of 20cm the radiator your body. This device and its antenna(s) must not be co-located or operation in conjunction with any other antenna or transmitter.

SAR statement (Transmitter):

This device meets the government's requirements for exposure to radio waves. This device is designed and manufactured not to exceed the emission limits for exposure to radio frequency (RF) energy set by the Federal Communications Commission of the U.S. Government.

The SAR limit set by the FCC is 1.6W/Kg. For body-worn operation, this device has been tested and meets the FCC RF exposure guidelines for use with an accessory that contains no metal and positions the device a minimum of 0mm from the body. RF exposure compliance with any body-worn accessory that contains metal was not tested and certified. And use of such body-worn accessory should be avoided. Accessory available in market and must be used to keep use distance 0mm from EUT to body-worn operation.

