

Mate RX & TX 使用手册

Rev 1.3



本手册所提到的产品规格和资讯仅供参考，如有变更，恕不另行通知。

关于 Mate1

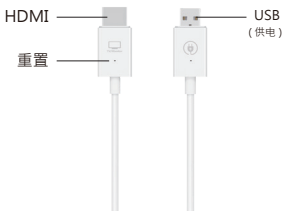
发射器 (H-1)

实时镜像传输你的笔记本电脑或移动设备的屏幕画面，适用于影剧播放、游戏娱乐和演示分享。



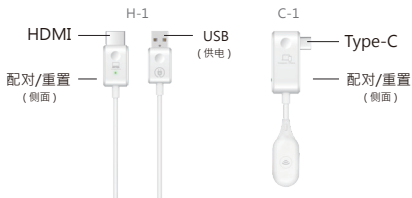
无线显示接收器 (R-1)

在高清电视机、投影仪等大屏幕上显示从发射器传输过来的屏幕画面。



关于 Mate2

发射器 (C-1、H-1)

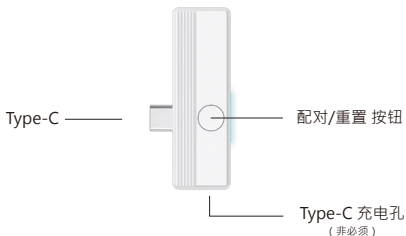


无线显示接收器 (R-1)



关于 Mate4

发射器 (C-1)

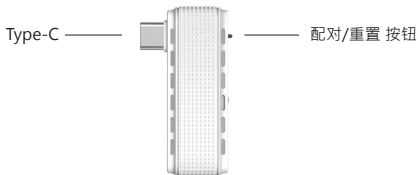


无线显示接收器 (R-1)



关于 Mate5

发射器 (C-1)



无线显示接收器 (R-1)



如何镜像

1 安装无线显示接收器

将无线显示接收器插到电视 HDMI 接口，并将 USB 接头以独立电源供电 (5V/1A)。

2 发射器接上电脑或手机即可开始投屏

将发射器接上电脑、手机的 Type-C 或 HDMI 接口，等待数秒至发射器上的闪灯停止，即开始自动投屏。

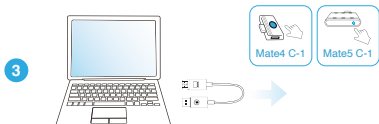
* 使用 Mate1 H-1 及 Mate2 H-1 型号的发射器 (HDMI 接头) 时，需以 USB 接头连接至电脑或以独立电源 (5V/1A) 供电。



3 停止/重新镜像

移除发射器来停止投屏，重新插入发射器，则可重新开始投屏。

* 使用 Mate4 C-1 及 Mate5 C-1 发射器 (Type-C 接头) 时，您可按下发射器上的 配对 / 重置 按钮来停止镜像或重新开始镜像。



注意：Mate 系列发射器皆支援 Windows/ macOS 电脑，Mate2 C-1、Mate4 C-1、Mate5 C-1 更支援 DP 输出的 Android 手机。按住或使用迴纹针戳入 配对 / 重置按钮 (孔) 20 秒可恢复原厂设定。

如何配对接收器

1 开启接收器配对模式

- (1) 将无线显示接收器的 USB 端连接至电源 (5V/1A)。
- (2) 将无线显示接收器 HDMI 端接上屏幕。
- (3) 使用迴纹针，长戳无线显示接收器 HDMI 端的重置孔 2 秒左右，待屏幕显示文字 “Release the button to pair with Mate” 时放开按钮。



2 按下发射器上的配对按钮

将发射器接上电脑，并确保已连接供电。在屏幕显示 “Ready to pair” 时，使用迴纹针戳入位於 HDMI / Type-C 端的配对 / 重置孔 5 秒，等待灯号熄灭即可完成配对。

* 使用 Mate4 C-1 及 Mate5 C-1 发射器时，請長按發射器上的配对 / 重置按钮 5 秒來完成配对。



注意：

无线显示接收器上的重置孔，根据按压时间不同，有两种设定模式。

- (1) 长按 2 秒：开启接收器的配对模式，供与发射器进行配对。
- (2) 长按 10 秒：将接收器回復原厂设定。

如何进行线上更新

1 开启接收器 SSID 及 PSK



- (1) 将无线显示接收器连接至屏幕，并将 USB 端连接至电源。
- (2) 使用迴纹针长戳无线显示接收器 HDMI 端重置孔，屏幕将显示投影设备的 SSID 及 PSK。

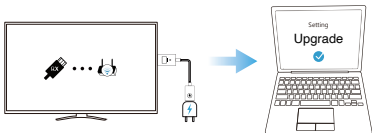
2 接收器连线网路

- (1) 开启手机或电脑的 Wi-Fi 设定页面
- (2) 连线至投影设备 SSID，输入屏幕显示的密码 PSK，完成连线
- (3) 开启浏览器，输入 **192.168.203.1**
- (3) 进入设定页面，开启网际网路设定，为接收器连线至网路。



3 使用网页设定来进行升级

- (1) 确认屏幕上方出现接收器连线至网路的图示。  ... 
- (2) 接收器连线至网路后，回到设定页面，并选择「升级」
- (3) 系统检视当前版本状态，若有最新版本，同意更新以完成系统升级。



产品参数

发射器

- 天线 :1T1R(已装载)
- 无线网络 : 5Ghz
- 端口 :HDMI 或 Type-C

无线显示接收器

- 天线 :1T1R(已装载)
- 无线网络 : 5Ghz
- 端口 :HDMI

NCC 警語

取得實驗證明之低功率射頻器材，非經核准，公司、商號或使用者均不得擅自變更頻率、加大功率或變更原設計之特性及功能。低功率射頻器材之使用不得影響飛航安全及干擾合法通信；經發現有干擾現象時，應立即停用，並改善至無干擾時方得繼續使用。前述合法通信，指依電信管理法規規定作業之無線電通信。低功率射頻器材須忍受合法通信或工業、科學及醫療用電波輻射性電機設備之干擾。

FCC statement

This device complies with part 15 of the FCC Rules. Operation is subject to the following two conditions: (1) this device may not cause harmful interference (2) this device must accept any interference received, including interference that may cause undesired operation.

Note: This equipment has been tested and found to comply with the limits for a Class B digital device, pursuant to part 15 of the FCC Rules. These limits are designed to provide reasonable protection against harmful interference in a residential installation. This equipment generates, uses, and can radiate radio frequency energy and, if not installed and used in accordance with the instructions, may cause harmful interference to radio communications. However, there is no guarantee that interference will not occur in a particular installation.

If this equipment does cause harmful interference to radio or television reception, which can be determined by turning the equipment off and on, the user is encouraged to try to correct the interference by one or more of the following measures:

- Reorient or relocate the receiving antenna.
- Increase the separation between the equipment and receiver.
- Connect the equipment to an outlet on a circuit different from that to which the receiver is connected.
- Consult the dealer or an experienced radio/TV technician for help.

Changes or modifications to this product not authorized by Apple could void the electromagnetic compatibility (EMC) and wireless compliance and negate your authority to operate the product.

This product has demonstrated EMC compliance under conditions that included the use of compliant peripheral devices and shielded cables between system components. It is important that you use compliant peripheral devices and shielded cables between system components to reduce the possibility of causing interference to radios, television sets, and other electronic devices.

RF Exposure Statement(Receiver):

To maintain compliance with FCC's RF Exposure guidelines, this equipment should be installed and operated with minimum distance of 20cm the radiator your body. This device and its antenna(s) must not be co-located or operation in conjunction with any other antenna or transmitter.

SAR statement (Transmitter):

This device meets the government's requirements for exposure to radio waves. This device is designed and manufactured not to exceed the emission limits for exposure to radio frequency (RF) energy set by the Federal Communications Commission of the U.S. Government.

The SAR limit set by the FCC is 1.6W/Kg. For body-worn operation, this device has been tested and meets the FCC RF exposure guidelines for use with an accessory that contains no metal and positions the device a minimum of 0mm from the body. RF exposure compliance with any body-worn accessory that contains metal was not tested and certified. And use of such body-worn accessory should be avoided. Accessory available in market and must be used to keep use distance 0mm from EUT to body-worn operation.