

Mate RX & TX 快速指南

Rev 1.3



產品訊息如有更改，恕不另行通知。

關於 Mate1

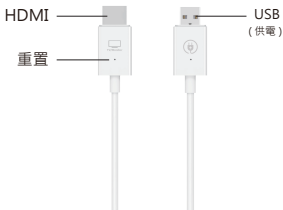
發射器 (H-1)

實時鏡像傳輸你的筆記本電腦或移動設備的螢幕畫面，適用於影劇播放、遊戲娛樂和演示分享。



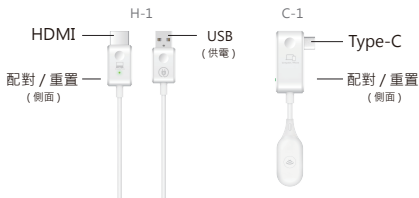
無線顯示接收器 (R-1)

在高畫質電視機、投影機等大螢幕上顯示從發射器傳輸過來的螢幕畫面。



關於 Mate2

發射器 (C-1、H-1)

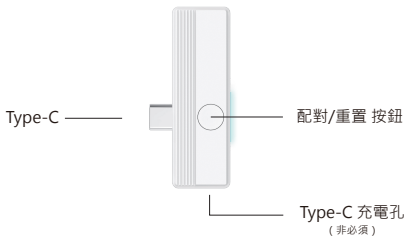


無線顯示接收器 (R-1)



關於 Mate4

發射器 (C-1)

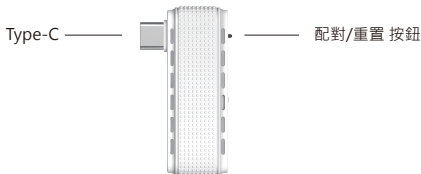


無線顯示接收器 (R-1)



關於 Mate5

發射器 (C-1)



無線顯示接收器 (R-1)



如何鏡像

1 安裝無線顯示接收器

將無線顯示接收器插到電視 HDMI 接口，並將 USB 接頭以獨立電源供電 (5V/1A)。

2 發射器接上電腦或手機即可開始投影

將發射器接上電腦、手機的 Type-C 或 HDMI 接口，等待數秒至發射器上的閃燈停止，即開始自動投影。

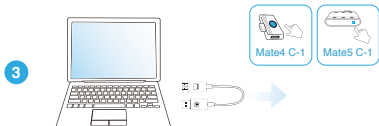
* 使用 Mate1 H-1 及 Mate2 H-1 型號的發射器 (HDMI 接頭) 時，需以 USB 接頭連接至電腦或以獨立電源 (5V/1A) 供電。



3 停止/重新鏡像

移除發射器來停止投影，重新插入發射器，則可重新開始投影。

* 使用 Mate4 C-1 及 Mate5 C-1 發射器 (Type-C 接頭) 時，您可按下發射器上的 配對 / 重置 按鈕來停止鏡像或重新開始鏡像。



注意：Mate 系列發射器皆支援 Windows/ macOS 電腦，Mate2 C-1、Mate4 C-1、Mate5 C-1 更支援 DP 輸出的 Android 手機。按住或使用迴紋針戳入 配對 / 重置 按鈕 (孔) 20 秒可恢復原廠設定。

如何配對接收器

1 開啟接收器配對模式

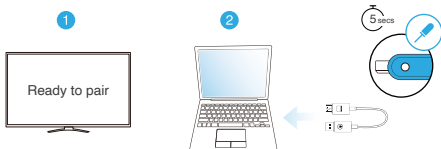
- (1) 將無線顯示接收器的 USB 端連接至電源 (5V/1A)。
- (2) 將無線顯示接收器 HDMI 端接上螢幕。
- (3) 使用迴紋針，長戳無線顯示接收器 HDMI 端的重置孔 2 秒左右，待螢幕顯示文字 “Release the button to pair with Mate” 時放開按鈕。



2 按下發射器上的配對按鈕

將發射器接上電腦，並確保已連接供電。在螢幕顯示 “Ready to pair” 時，使用迴紋針戳入位於 HDMI / Type-C 端的配對 / 重置孔 5 秒，等待燈號熄滅即可完成配對。

* 使用 Mate4 C-1 及 Mate5 C-1 發射器時，請長按發射器上的 配對 / 重置 按鈕 5 秒來完成配對。



注意：

無線顯示接收器上的重置孔，根據按壓時間不同，有兩種設定模式。

- (1) 長按 2 秒：開啟接收器的配對模式，供與發射器進行配對。
- (2) 長按 10 秒：將接收器回復原廠設定。

如何進行線上更新

1 開啟接收器 SSID 及 PSK

- (1) 將無線顯示接收器連接至螢幕，並將 USB 端連接至電源。
- (2) 使用迴紋針長戳無線顯示接收器 HDMI 端重置孔，螢幕將顯示投影設備的 SSID 及 PSK。

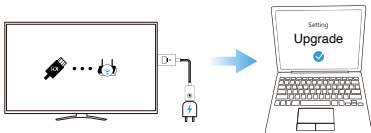
2 接收器連線網路

- (1) 開啟手機或電腦的 Wi-Fi 設定頁面
- (2) 連線至投影設備 SSID，輸入螢幕顯示的密碼 PSK，完成連線
- (3) 開啟瀏覽器，輸入 **192.168.203.1**
- (3) 進入設定頁面，開啟網際網路設定，為接收器連線至網路。



3 使用網頁設定來進行升級

- (1) 確認螢幕上方出現接收器連線至網路的圖示。
- (2) 接收器連線至網路後，回到設定頁面，並選擇「升級」
- (3) 系統檢視當前版本狀態，若有最新版本，同意更新以完成系統升級。



產品資訊

發射器

- 天線 :1T1R(已裝載)
- 無線網路 :5Ghz
- 端口 :HDMI 或 Type-C

無線顯示接收器

- 天線 :1T1R(已裝載)
- 無線網路 :5Ghz
- 端口 :HDMI

NCC 警語

取得實驗證明之低功率射頻器材，非經核准，公司、商號或使用者均不得擅自變更頻率、加大功率或變更原設計之特性及功能。低功率射頻器材之使用不得影響飛航安全及干擾合法通信；經發現有干擾現象時，應立即停用，並改善至無干擾時方得繼續使用。前述合法通信，指依電信管理法規規定作業之無線電通信。低功率射頻器材須忍受合法通信或工業、科學及醫療用電波輻射性電機設備之干擾。

FCC statement

This device complies with part 15 of the FCC Rules. Operation is subject to the following two conditions: (1) this device may not cause harmful interference (2) this device must accept any interference received, including interference that may cause undesired operation.

Note: This equipment has been tested and found to comply with the limits for a Class B digital device, pursuant to part 15 of the FCC Rules. These limits are designed to provide reasonable protection against harmful interference in a residential installation. This equipment generates, uses, and can radiate radio frequency energy and, if not installed and used in accordance with the instructions, may cause harmful interference to radio communications. However, there is no guarantee that interference will not occur in a particular installation.

If this equipment does cause harmful interference to radio or television reception, which can be determined by turning the equipment off and on, the user is encouraged to try to correct the interference by one or more of the following measures:

- Reorient or relocate the receiving antenna.
- Increase the separation between the equipment and receiver.
- Connect the equipment to an outlet on a circuit different from that to which the receiver is connected.
- Consult the dealer or an experienced radio/TV technician for help.

Changes or modifications to this product not authorized by Apple could void the electromagnetic compatibility (EMC) and wireless compliance and negate your authority to operate the product.

This product has demonstrated EMC compliance under conditions that included the use of compliant peripheral devices and shielded cables between system components. It is important that you use compliant peripheral devices and shielded cables between system components to reduce the possibility of causing interference to radios, television sets, and other electronic devices.

RF Exposure Statement(Receiver):

To maintain compliance with FCC's RF Exposure guidelines, this equipment should be installed and operated with minimum distance of 20cm the radiator your body. This device and its antenna(s) must not be co-located or operation in conjunction with any other antenna or transmitter.

SAR statement (Transmitter):

This device meets the government's requirements for exposure to radio waves. This device is designed and manufactured not to exceed the emission limits for exposure to radio frequency (RF) energy set by the Federal Communications Commission of the U.S. Government.

The SAR limit set by the FCC is 1.6W/Kg. For body-worn operation, this device has been tested and meets the FCC RF exposure guidelines for use with an accessory that contains no metal and positions the device a minimum of 0mm from the body. RF exposure compliance with any body-worn accessory that contains metal was not tested and certified. And use of such body-worn accessory should be avoided. Accessory available in market and must be used to keep use distance 0mm from EUT to body-worn operation.